

Complete conversion kit

REBUILDS



Your press equipment needs tender loving care to live a long and productive life with a low life-cycle cost. The right equipment makes daily maintenance easy and getting the right support

makes your production run smoothest. AP&T has a comprehensive range of both hardware and software that makes sheet metal forming both simpler and more profitable.

Route to a new life for press equipment - here's the map

CONTROL SYSTEM



Presses

AP&T presses
Other presses

Upgrade of existing PLC and HMI

S5/Mitsubishi



Lines

AP&T lines
Other lines

Monitoring of parallelism

Protects cylinders and tools

New digital encoder device

Digital cam

Coil equipment

AP&T coil equipment
Other coil equipment

Upgrade of existing servo equipment

Indramat

HYDRAULIC EQUIPMENT

Pumps

Single pumps
Tandem pumps



Pump and motor

From drained pumps to conventional assembly



Complete hydraulic units

Modules ready for installation



Oil cooling and oil filtering

Air or water cooling

AUTOMATION



Exchange of existing automation equipment

Automation equipment



- Tool clamping**
Rebuild or add-on

- Force relief of the slide when using gas springs**
Reduces wear in the hydraulics

MECHANICAL PRESSES

- Electrical rebuild**
Increased reliability



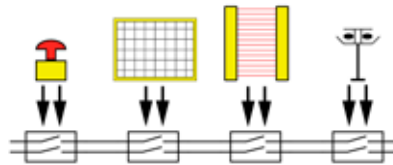
- Automation**
Increased production

- Refurbishment**
Take care of your investment

SAFETY

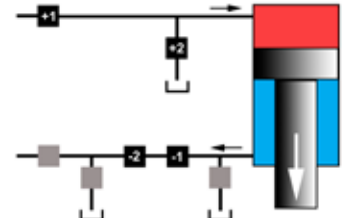


- Light curtain/
Light beam device**

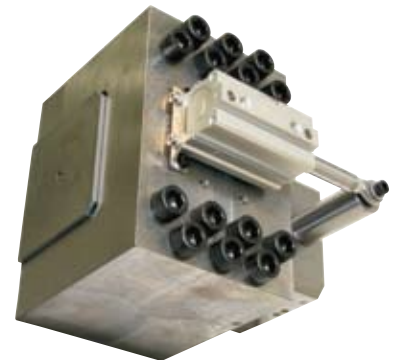


- Electrical safety**

- Mechanical guards**



- Hydraulic safety**



- Slide blocking device**

Designed and built in accordance with current European standards

PRESS TOOLS

- Tools**
Rebuilds and repairs





AP&T supports you all the way. With field and contract service, rebuilds, spare parts, training and a lot more. We believe in maintaining long-term relationship with our customers. In order to do this, we keep the highest quality in our products, not only upon delivery and in projects, but in full support of your day to day operations. Contact us at AP&T Customer Service!

- › **Field Service**
- › **Preventive Maintenance**
- › **Rebuilds**
- › **Spare Parts**
- › **Training**
- › **Technical Support**

